

# Logic

Copyright 1987 • Armstrong World Industries, Inc.

Floor Division, Lancaster, Pa.

At New Orleans hospital

## Top Medintech specialist is on staff

METAIRIE, LA.—Frank O'Brien is on the hospital staff here, but if you told him there was a "Code Blue" medical emergency, O'Brien likely would scramble to put down a few hundred square yards of blue Medintech #86413.

O'Brien is not a surgeon, you see. But he is just what the doctor ordered for East Jefferson General Hospital here in suburban New Orleans.

"Frank is from the old school," says Cindy Gaudin, the nonprofit hospital's administrator of environmental services. "He stands for quality in flooring installations, and he does such an outstanding job that we want him to do all our flooring work. That's why we signed him to a contract as our ex-

clusive installer."

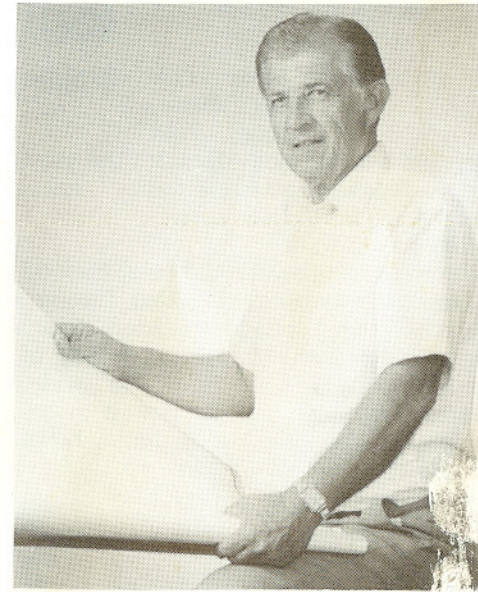
So meet Frank O'Brien, M.D. ("Medintech Detail"). "The hospital's involved in an expansion program, and there's a lot of flooring work to be done," says O'Brien, head of O'Brien Flooring, a commercial firm that's known throughout the state for its quality work and outstanding customer service.

O'Brien, whose company has installed flooring in practically every major commercial building in Louisiana, including the Superdome, says the East Jefferson Hospital project is unlike any other he's known. "These are smart people," he says. "We're talking here about 36,000 square yards of Medintech inlaid vinyl sheet."

The flooring plans for the hospital are extensive. They combine flooring for the new hospital addition, which will almost double the hospital's current size, with a complete redo of the floors in the 16-year-old main complex.

"They had a lot of carpet in there before," says O'Brien. "Now they're converting a good portion of that to Medintech. All of the bathrooms in the rooms get it. And where they had tile before, we're ripping that up and replacing it with Medintech—the hallways, the restrooms, the (surgery) scrub rooms, the janitorial and maintenance departments, the operating rooms, the

*(continued on page 2)*



**CONTRACTOR Frank O'Brien has installed floors in major buildings throughout Louisiana.**

## Medintech . . .

*(continued from page 1)*

isolation units and all of the nurses' stations."

O'Brien recommended Medintech to the hospital because it offers better protection from staining and discoloration, problems that had plagued the existing vinyl flooring.

"They also had a lot of bubbling, splitting and peaking," says O'Brien. "But with Medintech, we're using a seam-welding rod to heat-seal all the seams, and that really does a good job."

O'Brien says the logistics and scheduling demands at the hospital require his crews to work at all hours—and work quickly.

"When they need the work, we get it done, day or night," he says proudly. "Hey, you can't tie up an operating room or a patient's room. You've got to work quickly, and get it right the first time."

Filling that prescription is precisely why O'Brien Flooring was made part of the staff at East Jefferson General Hospital. They know that when it comes to flooring, it pays to call Frank O'Brien, M.D.